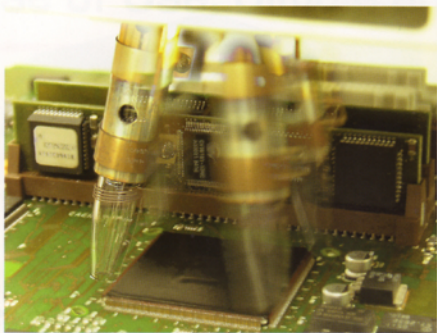


SD-3000 II

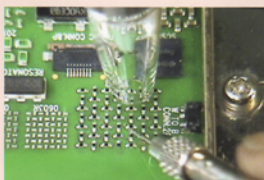
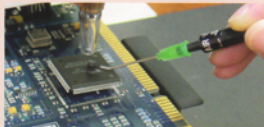
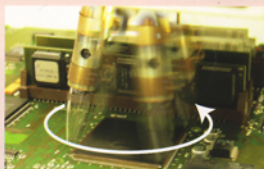
DIC DEN-ON REWORK SYSTEM



Control Panel



Operation



● Rework Operation of QFPs and others

The oscillation range of Nozzle can be adjusted up to 50 mm in the axis of X and Y. The vacuum pick is used to quickly remove SMT components when the solder melting by hot blow air.

● Rework Operation of Micro-components

Set the X & Y Axis Knob at 0 and set the Blow Knob at 1 to 2. Confirming the target component with the optional camera and tool kits for small component or a magnified mirror, the removal can be done.

Specifications

Heating Method	Hot Air Nozzle, 350W , 4mm dia.
Airflow Rate	1.5L - 12L/min in 8 Steps
Air Pump/Vacuum Pump	Internal, Does not Require Shop Air
Nozzle Range Maximum	X & Y: 0-50mm Z: 25mm
Temperature Control	Analog with Digital Readout for 260 to 600°C
Timer Control	Analog with Digital Readout for 5 - 500 seconds
Max. PCB Size	Throat Depth = 420mm, Width = Any Size
Power	AC100v, 120v or 230v 360w 50/60Hz
Dimensions	300mm W X 310mm H X 450mm D
Weight	9Kg

Accessories

Vacuum Pick(Tweezer)
3 Suction Pads(Cups) for Vacuum Pick(Tweezer)
5 Filters for Vacuum Pick(Tweezer)
Base Plate with 430mm x 300mm
2 for PCB Holder Small (P/#H-1)
2 for PCB Holder Large (P/#H-2)
Base Plate Stand (P/#S-1)
PCB Support Pin (P/#H-3)
Metal Frame (P/#20-10-10)